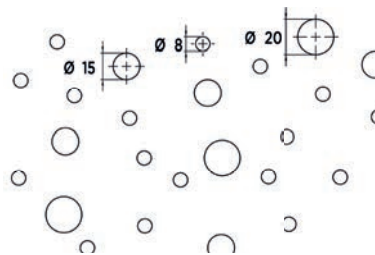


Rigitone® Edge Activ'Air® 8-15-20 Super

- > Round perforations arranged randomly across the whole surface
- > Good acoustic absorption
- > Improves the quality of internal air through Activ'Air® exclusive technology
- > Easy to install thanks to the chamfered edge



in mm

| | |
|------------------------|-------------------------------|
| Material | gypsum |
| Acoustic tissue | black* |
| Edge type | chamfered (sanded and primed) |
| Surface | ready for painting |
| Format (mm) | 1204 x 1961 |
| Thickness (in mm) | 12.5 |
| Approx weight. (kg/sq) | 10 |
| Perforation (mm) | ø = 8, 15 & 20 |
| Perforation rate | 10% |

* White acoustic tissue on demand / Without acoustic tissue on demand.



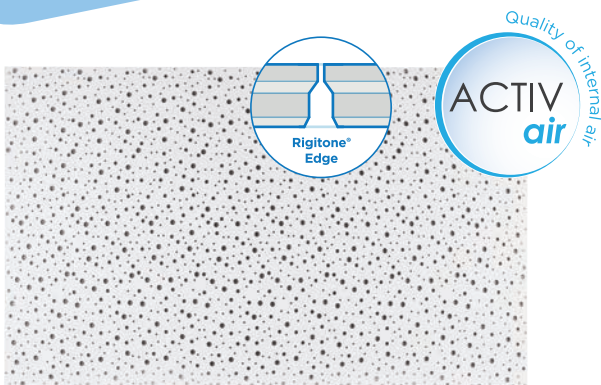
www.placo.fr

Rigitone® Edge Activ'Air® 8-15-20 Super



Recycling certified

Sound Absorption

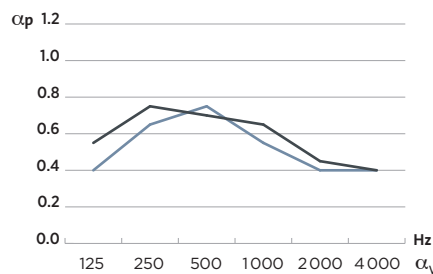


PERFORMANCES

- Fire reaction:** A2-s1, d0.
- Behaviour in damp environment**
Rigitone® Edge Activ'Air® panels may be used in rooms with low and medium relative humidity.
- Acoustic behaviour**
Acoustic absorption (rock wool without vapour barrier).

STANDARDS

- Rigitone® Edge Activ'Air® panels benefit from A+ classification for Internal Air Quality (Eurofins report in accordance with standards ISO16000).
- Rigitone® Edge Activ'Air® panels comply with standard NF EN 14190.



| | 125 | 250 | 500 | 1000 | 2000 | 4000 | α_w |
|------------------------------|------|------|------|------|------|------|------------|
| Plenum 200 mm / Wool 60 mm | 0.55 | 0.75 | 0.70 | 0.65 | 0.45 | 0.40 | 0.50 (L) |
| Plenum 200 mm / Without wool | 0.40 | 0.65 | 0.75 | 0.55 | 0.40 | 0.40 | 0.50 (LM) |

CSTB AC10-26029022 - E1 - CSTB AC10-26029022 - E2

May 2022 • The photos and illustrations used in this document may differ from the actual product. The reproduction, even partial, of diagrams, photos and texts used in this document is prohibited without authorisation from Placoplatre (Law of 11 March 1957). Photos: All rights reserved.